



SCHEMATICS

CUSTOMER SERVICE
1-800-446-1071

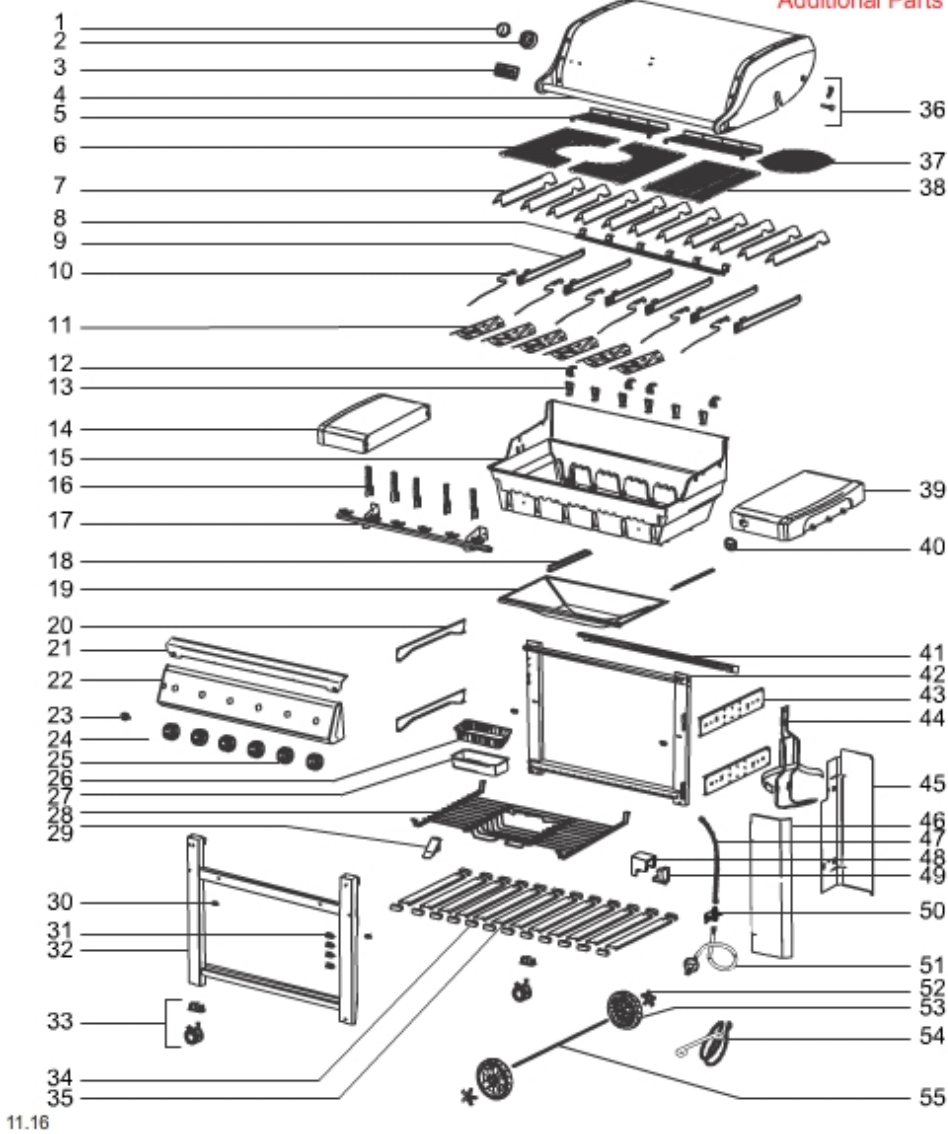
Switzerland / Gas / Genesis II (2017)

[VIEW ALL](#)

MODEL #: 63010175 DESCRIPTION: GENESIS II E-610 LP W/GBS BLK (2017) (CENTRAL EUROPE)

[Print Schematic](#)

Genesis® II E-610 LP 2017
Additional Parts



11.16

SEQ	DESCRIPTION	PART#
A	Literature kit, Genesis II LP, export '17	41074105
B	Boot valve, Genesis II E/SE series (set of 2)	66310
B	Lid hardware, Genesis II E/SE series	66060
B	Hardware, cookbox rails/brackets, Genesis II/LX series	66683
B	Hardware, wheel, Genesis II E/SE series	66682

B	Hardware, manifold, Genesis II E/SE series	66678
B	Hardware, frame/tank hanger, Genesis II/LX	66680
B	Hardware, tank panel buttons	66679
B	Zinc wrench	72974
B	Hardware bag E, Genesis II LHS fixed table	72969
B	Hardware bag I, Genesis II tank hanger	72973
B	Hardware bag G, igniter module, Genesis II E/SE series	72971
B	Hardware bag D, Genesis II RHS fixed table	72968
B	Hardware, cookbox, Genesis II E/SE series	66824
B	Hardware kit, Genesis II E-410/610 LP, export	73219
B	Hardware bag A, frame/wheel, Genesis II E/SE series	72965
1	Thermometer, Genesis/Summit, export '14	70014
2	Thermometer bezel, Genesis	66049
3	Weber logo	66282
4	Lid bumpers, Genesis II (qty 2)	66061
4	Lid assembly, Genesis II E-610, black	66059
5	Warming rack, Genesis II E-210/610	66043
6	Gourmet BBQ System porcelain enameled cast iron cooking grates, 600 series, export	66092
7	Porcelain enameled flavorizer bars, Genesis II E-610 (qty 11)	66034
8	Crossover tube, Genesis II 600 series, export '17	66169
9	Burner tube kit, 29 mb, Genesis II 600 series (qty 2)	66776
10	Igniter electrode w/wire, 27", yellow	66833
10	Igniter electrode w/wire, 36", black	66362
10	Igniter electrode w/wire, 46", green	66363
10	Igniter electrode w/wire, 32", red	66365
10	Igniter electrode w/wire, 59", white	66366
10	Igniter electrode w/wire, 51", blue	66364
11	Heat deflector set, Genesis II E-610 (qty 6)	66042
12	Warming mounting bracket set, Genesis II E/SE series (qty 2)	66046

12	Hardware, cookbox rails/brackets, Genesis II/LX series	66683
13	Hardware, cookbox rails/brackets, Genesis II/LX series	66683
13	Burner tube kit, export (qty 2)	66514
14	LHS fixed table, Genesis II	66370
14	Zinc wrench	72974
14	Hardware bag E, Genesis II LHS fixed table	72969
15	Cookbox, Genesis II/LX 600 series, export '17	66163
15	Hardware, cookbox, Genesis II E/SE series	66824
15	Hardware, cookbox rails/brackets, Genesis II/LX series	66683
15	Hardware, manifold, Genesis II E/SE series	66678
16	Ignition wire clip square set (qty 2)	66360
17	Hardware, manifold, Genesis II E/SE series	66678
17	Manifold assembly, LP, 29 mb, Genesis II 600 series, export	66300
18	Bottom tray rails, Genesis II E/SE series	66028
18	Hardware, cookbox rails/brackets, Genesis II/LX series	66683
19	Grease tray, Genesis II/LX 600 series	66038
20	Hardware, frame/tank hanger, Genesis II/LX	66680
20	LHS frame connector, Genesis II E/SE series	66219
21	Top trim for control panel, SS, Genesis II/LX 600 series	66231
21	Hardware, frame/tank hanger, Genesis II/LX	66680
22	Hardware, frame/tank hanger, Genesis II/LX	66680
22	Control panel assembly, Genesis II E-610	66256
23	Momentary/light switch, Genesis II E/SE series	66220
24	Igniter button wire, Genesis II E-610	66378
25	Control knob kit, Genesis II E/SE series	66048
25	Control knob kit, Genesis II 310/610	66047
26	Aluminum drip pans - package of 10	6417
27	Catch pan kit	70379
28	Warming rack, Genesis II E-610	66173

29	Catch pan retainer/lock, Genesis II E/SE series	66174
30	Wire rack bushing set, Genesis II E/SE series (qty 4)	66175
31	Igniter wire clip set, Genesis II E/SE series (qty 4)	66368
32	Front frame, Genesis II 600 series, export	66236
32	Hardware, frame/tank hanger, Genesis II/LX	66680
33	Locking caster w/insert, Genesis II E/SE series	66250
34	Bottom slat mounting bracket set, Genesis II E/SE series (qty 2)	66066
35	Bottom slat, single w/label, Genesis II LP, export	66067
35	Bottom slat set, Genesis II E/SE series (qty 2)	66068
36	Lid hardware, Genesis II E/SE series	66060
37	PECI cooking grate insert, Spirit w/GBS	64830
38	Gourmet BBQ System porcelain enameled cast iron cooking grates, 600 series, export	66092
39	Zinc wrench	72974
39	iGrill Plugs, Genesis II E/SE series (qty 2)	66347
39	Hardware bag D, Genesis II RHS fixed table	72968
39	RHS fixed table, Genesis II E/SE series	66343
40	iGrill cover, Genesis II E/SE series	66344
41	Hardware, frame/tank hanger, Genesis II/LX	66680
41	Top trim for control panel, SS, Genesis II E-610	66224
42	Hardware, frame/tank hanger, Genesis II/LX	66680
42	Rear frame, Genesis II 600 series, export	66244
43	Hardware, frame/tank hanger, Genesis II/LX	66680
43	RHS frame connector, Genesis II E/SE series (qty 1)	66218
44	Tank hanger w/strap, Genesis II LX series, export	66257
44	Tank hanger strap w/clasp, export	66258
44	Hardware, frame/tank hanger, Genesis II/LX	66680
45	Hardware, tank panel buttons	66679
45	Rear tank enclosure panel, Genesis II, export	66217
46	Hardware, tank panel buttons	66679

46	Front tank panel, Genesis II E/SE series	66225
47	Corrugated gas line, Genesis II E/SE-410/610	66165
48	Igniter module cover, Genesis II/LX 600 series	66359
49	Igniter kit, Genesis II E-610	66356
49	Igniter module, Genesis II/LX 600 series	66261
50	Bulkhead assembly, Genesis II 400/600 series, export	66208
50	Hardware, frame/tank hanger, Genesis II/LX	66680
51	Not supplied by Weber	22222
52	Wheel insert kit, Genesis II/LX	66252
53	Wheel assembly w/insert, Genesis II E/SE series	66249
54	Match stick holder, Genesis II E/SE-410/610	66346
55	Axle w/hardware, Genesis II E/SE series	66251
55	Hardware, wheel, Genesis II E/SE series	66682

105 Items Found

[SCROLL TO TOP](#)

[View All](#)



Нажмите правой кнопкой мыши, чтобы
запустить плагин "Adobe Flash Player"